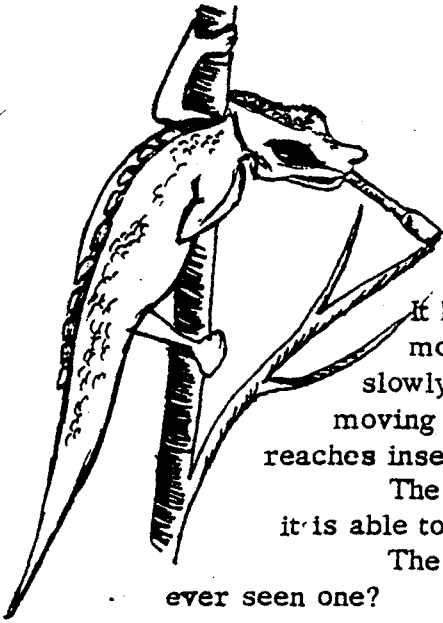


COMPREHENSION CHALLENGES



When a chameleon is frightened, it turns pale. It can change colors as well. A chameleon's colors are brown, greens, greenish blues, and yellows. These colors match the leaves among which it usually lives.

The chameleon is a lizard and belongs to the reptile family. It has a large head, and its body is flattened from side to side. It moves slowly as if it were in a slow motion film. Although it moves slowly itself, it eats and catches fast moving insects with its quickly moving tongue. The sticky tongue shoots rapidly from the mouth and reaches insects several inches away.

The chameleon lives in a tree. Because its feet act like pincers, it is able to perch on a branch waiting for unsuspecting insects to fly by.

The chameleon is one of nature's interesting creatures. Have you ever seen one?

1. This selection is about:
 - (a) a lizard
 - (b) reptiles
 - (c) birds
 - (d) insects
2. Fear causes a chameleon to:
 - (a) scurry away
 - (b) turn pale
 - (c) hide
 - (d) become immobile
3. The home of a chameleon is in:
 - (a) a tree
 - (b) the dessert
 - (c) a rock
 - (d) the sand
4. Chameleons cling to branches with their:
 - (a) sticky bodies
 - (b) pincer-like feet
 - (c) long tails
 - (d) strong legs
5. Although a chameleon has a fast moving tongue,
 - (a) its body moves very slowly
 - (b) it is difficult to catch insects
 - (c) it is always hungry
 - (d) it makes small use of it
6. Unsuspecting means:
 - (a) expecting
 - (b) distrusting
 - (c) trusting
 - (d) doubting
7. If a chameleon is frightened while sitting on autumn leaves, his color will:
 - (a) turn red
 - (b) turn yellow
 - (c) become green
 - (d) be greenish blue
8. From the story you can see that a pet chameleon would need:
 - (a) a dry cage
 - (b) an aquarium
 - (c) an aquarium with jutting rocks
 - (d) a container with a wooden branch